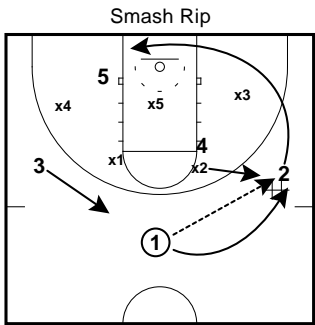
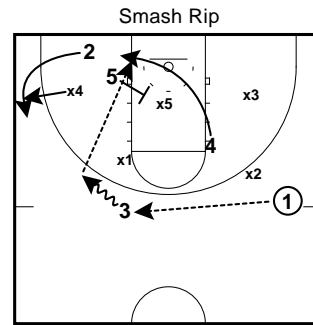


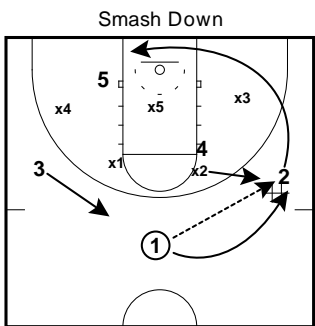
Wichita State Zone Attack



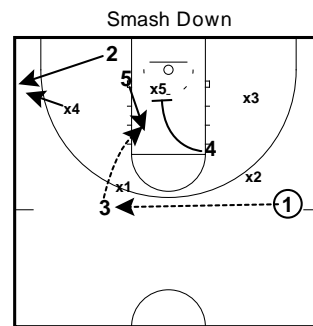
1 passes to 2 on the right wing and follows for a handoff (to draw x2, the right top defender, to him). After 2 hands it back to 1, he runs along the baseline.



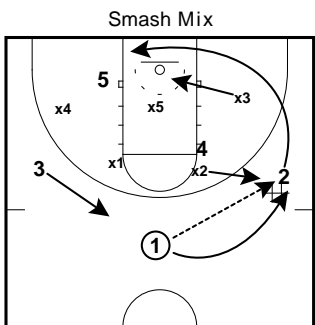
1 passes to 3. With 2 being Ron Baker (Wichita State's best shooter), the forward defender (x4 in diagram) follows him out to the 3-point line. 3 takes a dribble and throws it to 4 who has cut off 5's rip screen (of x5, the middle defender).



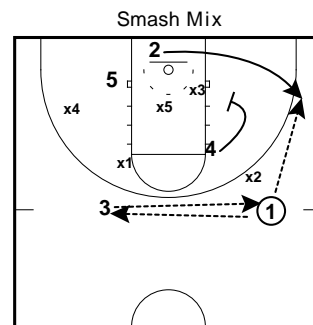
1 passes to 2 on the right wing and follows for a handoff (to draw x2, the right top defender, to him). After 2 hands it back to 1, he runs along the baseline.



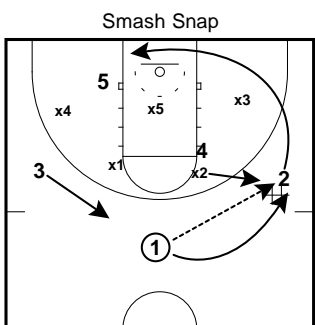
With x5 playing low underneath the rim to take away the rip cut for 4 (run in "Smash Down"), 4 sets a screen on him (x5), allowing 5 to come off for a short shot right in front of the rim.



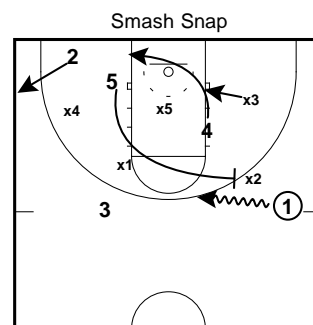
1 passes to 2 on the right wing and follows for a handoff (to draw x2, the right top defender, to him). After 2 hands it back to 1, he runs along the baseline.



x3 shades into the paint to try to muck up any kind of screening action between 4/5. 3 throws it back to 1 as 4 screens in x3 for 2 to come behind for a shot.



1 passes to 2 on the right wing and follows for a handoff (to draw x2, the right top defender, to him). After 2 hands it back to 1, he runs along the baseline.



5 sprints into a ball screen for 1 on the right wing. 4 moves over to form a weakside triangle on the left side of the floor.